

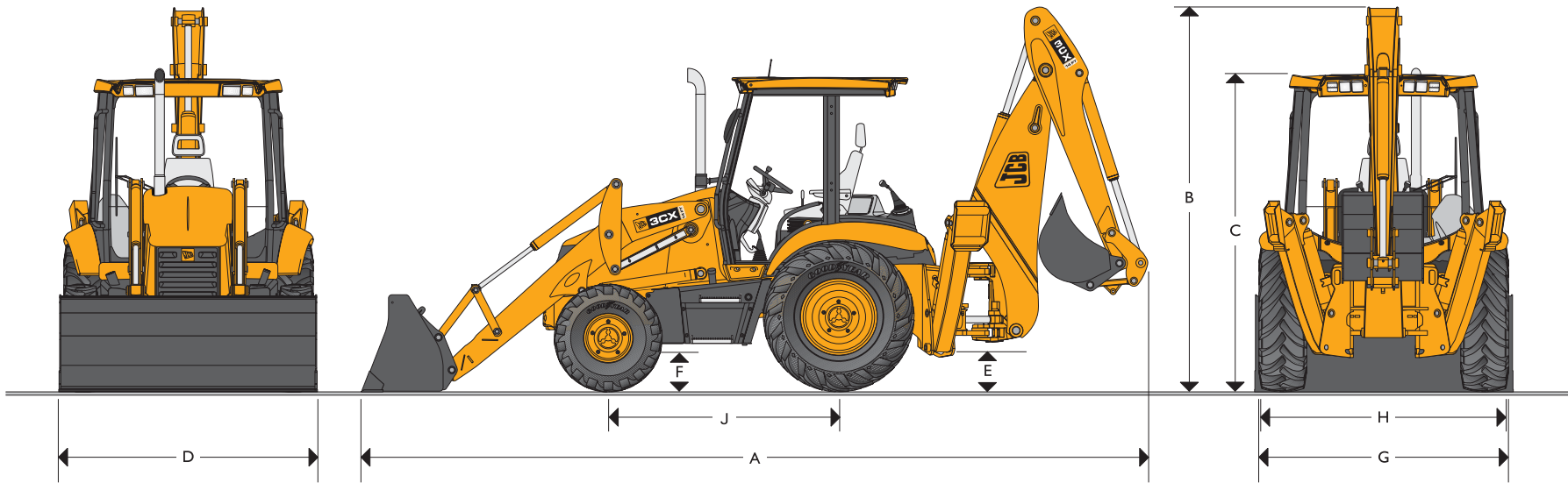
JCB | 3CX



CONSTRUCTION
EQUIPMENT



JCB BACKHOE LOADER | 3CX 14FT (214)



JCB BACKHOE LOADER | 3CX 14FT

STATIC DIMENSIONS

JCB Backhoe Loaders feature a heavy duty one piece mainframe, componentized driveline and fully enclosed engine compartment. All fluid and component compartments are lockable using the ignition key.

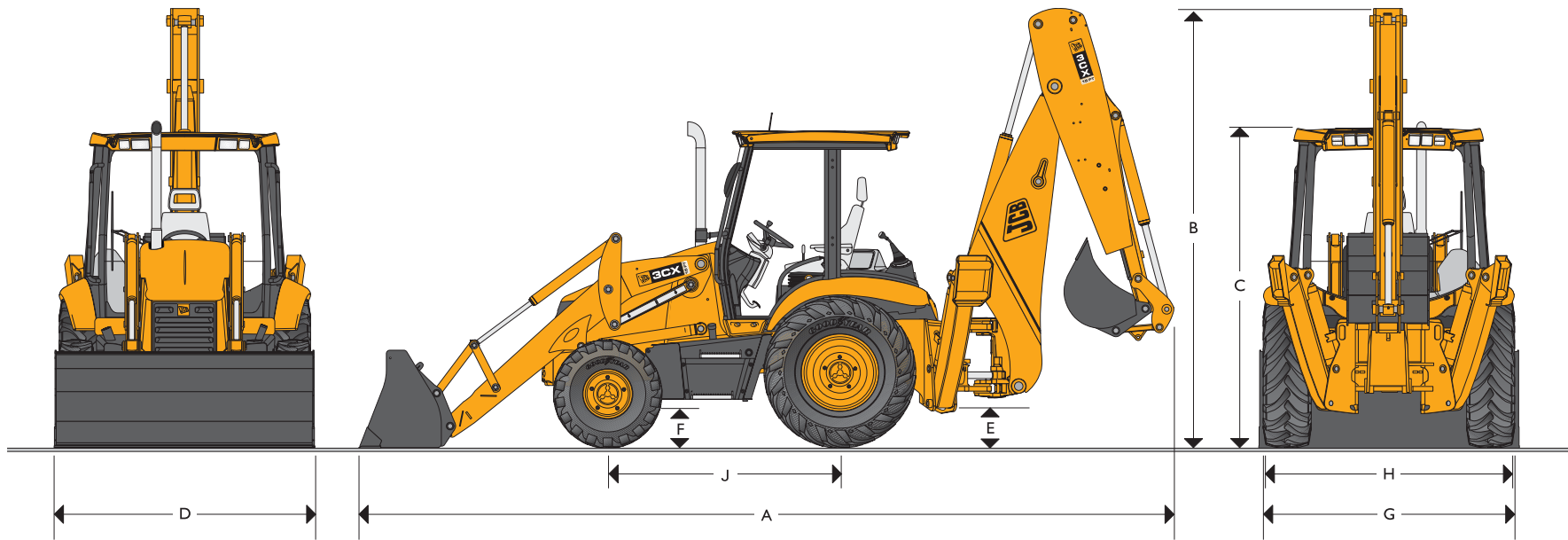
3CX 14 FT	2WD ft-in (meter)	4WD ft-in (meter)
A Transport length	23-7 (7.19)	23-7 (7.19)
B Transport height – standard backhoe	11-3 (3.43)	11-3 (3.43)
B Transport height – Extradig	11-7 (3.53)	11-7 (3.53)
C Height to top of cab/canopy	9-5 (2.87)	9-5 (2.87)
D Overall width with bucket	7-8 (2.45)	7-8 (2.45)

3CX 14 FT	2WD ft-in (meter)	4WD ft-in (meter)
E Ground clearance – mainframe	1-1 (0.33)	1-1 (0.33)
F Ground clearance – front axle	1-1.4 (0.34)	0-11 (0.28)
G Front wheel track	7-1 (2.16)	7-4.5 (2.25)
H Rear wheel track	7-3 (2.21)	7-3 (2.21)
J Wheelbase	7-3 (2.21)	7-5 (2.26)

Helping You Get the Job Done!



JCB BACKHOE LOADER | 3CX 15FT (215)



JCB BACKHOE LOADER | 3CX 15FT

STATIC DIMENSIONS

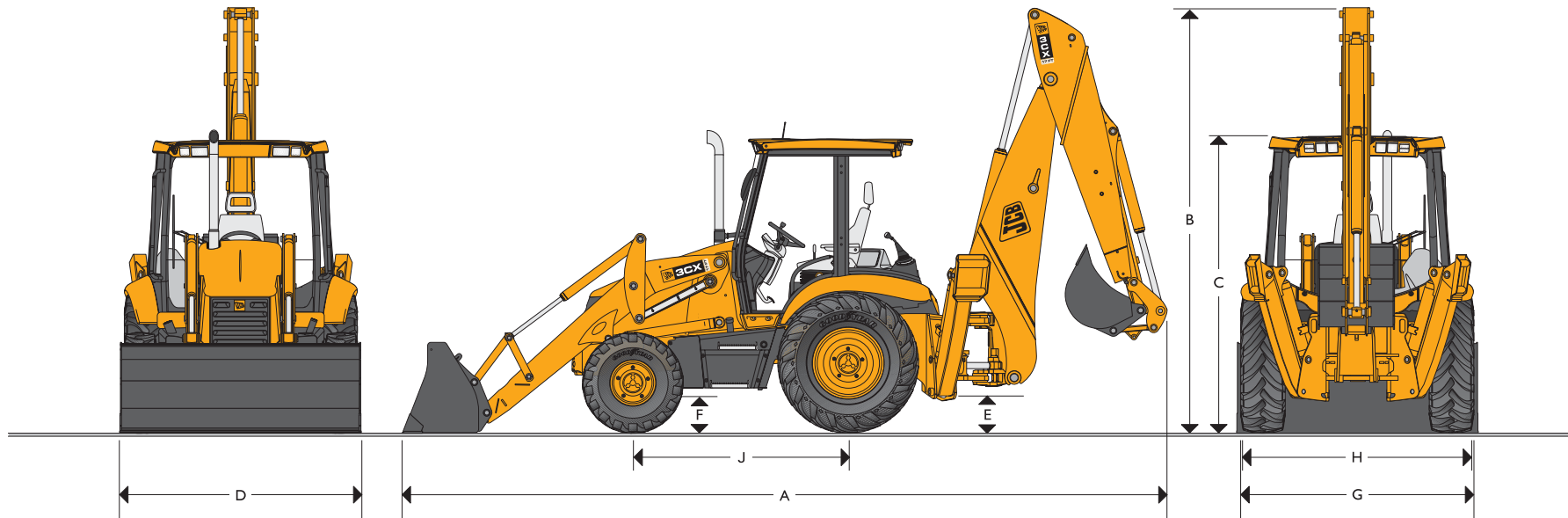
JCB Backhoe Loaders feature a heavy duty one piece mainframe, componentized driveline and fully enclosed engine compartment. All fluid and component compartments are lockable using the ignition key.

Machine model	3CX 15 FT ft-in (meter)
A Transport length	24-7 (7.49)
B Transport height – standard backhoe	12-9 (3.89)
B Transport height – Extradig	12-10 (3.91)
C Height to top of cab/canopy	9-5 (2.87)
D Overall width with bucket	7-8 (2.35)

Machine model	3CX 15 FT ft-in (meter)
E Ground clearance – mainframe	1-1 (0.33)
F Ground clearance – front axle	0-11 (0.28)
G Front wheel track	7-4.5 (2.25)
H Rear wheel track	7-3 (2.21)
J Wheelbase	7-5 (2.26)



JCB BACKHOE LOADER | 3CX 17 FT (217)



JCB BACKHOE LOADER | 3CX 17 FT

STATIC DIMENSIONS

JCB Backhoe Loaders feature a heavy duty one piece mainframe, componentized driveline and fully enclosed engine compartment. All fluid and component compartments are lockable using the ignition key.

Machine model	3CX 17 FT ft-in (meter)
A Transport length	24-7 (7.49)
B Transport height – standard backhoe	13-7 (4.14)
B Transport height – Extradig	13-9 (4.19)
C Height to top cab/canopy	9-5 (2.87)
D Overall width with bucket	8-0 (2.44)

Machine model	3CX 17FT ft-in (meter)
E Ground clearance – mainframe	1-1 (0.33)
F Ground clearance – front axle	0-11 (0.28)
G Front wheel track	7-4.5 (2.25)
H Rear wheel track	7-3 (2.21)
J Wheelbase	7-5 (2.26)

A Product of Hard Work



JCB BACKHOE LOADER | 3CX



JCB BACKHOE LOADER | 3CX

OPERATING WEIGHTS

Operating weight includes machine equipped with standard loader bucket, 24" HD backhoe bucket, full fluid levels and SAE operator.

3CX	14FT-2WD	14FT-4WD	15FT	17FT
	lb (kg)	lb (kg)	lb (kg)	lb (kg)
Base unit – standard backhoe	15053 (6830)	15439 (7005)	17037 (7730)	17515 (7947)
Add for: cab	540 (245)	540 (245)	540 (245)	540 (245)
Add for: Extradig	998 (453)	998 (453)	646 (293)	646 (293)

JCB 444 ENGINE

Four cylinder, direct injection diesel. Water pump, spin-on oil filter, fuel filter, water sediment separator prefilter, dual element air cleaner with internal pre-cleaner, cold start aid.

3CX	14FT	15FT	17FT
Displacement	268 cubic inches (4.4 liters)		
Aspiration	Turbo		
Rated engine RPM	2200		
Horsepower ratings	HP (kW)		
SAE gross	92 (68.6)	100 (74.2)	100 (74.2)
SAE net	90.1 (67.2)	97.6 (72.8)	97.6 (72.8)
Maximum torque	lb-ft (Nm)	lb-ft (Nm)	lb-ft (Nm)
SAE gross	287.6 (390)	313.5 (425)	97.6 (72.8)
SAE net	281.8 (382)	307.6 (417)	97.6 (72.8)
Max. torque RPM	1300		

STEERING

Power hydrostatic system utilizing the main hydraulic pump via a steering priority valve. In the event of engine failure, emergency steering is maintained.

3CX	14FT-2WD	14FT-4WD	15FT-4WD	17FT-4WD
Steering axles	Front	Front	Front	Front
Type	Hydrostatic	Hydrostatic	Hydrostatic	Hydrostatic
Steering turns – lock to lock	3.00	3.00	3.00	3.00
	ft-in (meter)	ft-in (meter)	ft-in (meter)	ft-in (meter)
Turning circle – unbraked	26-5 (8.05)	27-2 (8.3)	27-6 (8.4)	27-6 (8.4)
Loader clearance circle	35-2 (10.72)	36-0 (11.0)	36-0 (11.0)	36-0 (10.97)

ENGINE SUPPORT SYSTEM

Engine support system is designed for ease of daily checks, routine maintenance and longer service intervals.

Fuel type	Diesel.
Fuel filter	Replaceable cartridge plus water/sediment separator prefilter.
Air cleaner	Dual, dry element type with self cleaning internal air intake pre-cleaner.
Oil filter and lubrication	Full flow, spin-on type filter.
Cooling system	Hot climate specification, pressurized 14.5 psi (1.0 bar). Pressurized recovery tank with integral filler neck.

ELECTRICAL AND INSTRUMENTATION

12 volt negative ground, utilizing wiring and connectors meeting IP69 water ingress test standard. Central fuse panel.

Gauges	Tachometer, engine coolant temp, fuel level, hourmeter, clock.
Warning system	Audible and visual system for engine oil, water in fuel, transmission oil temperature and pressure, park brake, air cleaner, alternator.
Battery	12V, 950 CCA.
Pre-wire	Radio speakers (cab), beacon (cab and canopy).
Horn	Controlled from both front and rear.
Reverse alarm	Standard.
Alternator	95 amp.

JCB TORQUE LOCK (OPTIONAL)

An industry exclusive JCB Torque Lock enables an operator to dramatically reduce travel time and improve fuel efficiency during roading operations.

Torque Lock incorporates a clutch which, when engaged, enables a direct connection between the engine and transmission. By "locking up" the torque converter, slippage is eliminated. Torque Lock engages automatically in "A" model on Autoshift models only.



JCB BACKHOE LOADER | 3CX



JCB BACKHOE LOADER | 3CX

TRANSMISSION

The JCB Transmissions are designed and built specifically for JCB Backhoe Loaders. They feature synchronized shifting in all gears. Powershuttle between forward and reverse. Ground speeds are designed to maximize production.

3CX	14 FT 2WD/4WD	15FT	17FT
Manufacturer	JCB	JCB	JCB
Type	JCB Synchroshuttle	JCB Powershift	JCB Autoshift
Torque converter	Single stage dual phase	Single stage dual phase	Single stage dual phase
Torque converter ratio	3.01:1	2.52:1	2.52:1
Torque Lock	N/A	N/A	Option
Gears forward/reverse	4F/4R	4F/4R	4F/4R
Gear selection	Manual	Powershift*	Powershift*
Shuttle control – F/R	Power shuttle	Power shuttle	Power shuttle
Travel speeds	mph (kph)	mph (kph)	mph (kph)
Tires equipped	16.9-24 tires	19.5-24 tires	19.5-24 tires
Gear 1	3.4 (5.5)	3.1 (5.0)	3.1 (5.0)
Gear 2	5.6 (8.9)	5.8 (9.3)	5.8 (9.3)
Gear 3	11.9 (19.1)	13.4 (21.5)	13.4 (21.5)
Gear 4	22.5 (36.0)	22.5 (36.0)	22.5 (36.0)

TIRES

Tires listed are most popular sizes. See your JCB Dealer for a full listing of available tire sizes and tread designs. Tires are listed in as front and rear combinations that are compatible with axle availability.

3CX	2WD	4WD
11L-16, F3, 12 ply – front	●	
19.5L-24, R4, 10 ply – rear	●	
19.5L-24, R4, 12 ply – rear	●	
14-17.5, FWD, 10 ply – front		●
19.5L-24, R4, 10 ply – rear		●
19.5L-24, R4, 12 ply – rear		●
335/18 Radial front		●
16.9-28 XTLA* Radial rear		●

BRAKES

Self adjusting oil immersed, inboard, multi-disc type. Hydraulic power assisted actuation on all models. Oil immersed multi-plate brakes provide fade free stops.

Two pedal service brakes for individual or simultaneous operation. Selectable 4WD braking for improved road deceleration. (4WD model only).

For synchroshuttle transmissions, the independent parking brake is mounted on the input shaft of the rear axle.

For Powershift transmissions, the integral park brake is a ball and ramp, oil immersed type located within the transmission.

FRONT AXLE

JCB front axles are designed and built specifically for backhoe loaders and accept a wide variety of tire combinations.

3CX	14FT-2WD	14FT-4WD	15FT	17FT
Type	Flame cut bar w/fixed tread	JCB Max-Trac torque proportioning	JCB Max-Trac torque proportioning	JCB Max-Trac torque proportioning
Limited slip	N/A	N/A	N/A	N/A
Axle ratings	lb (kg)	lb (kg)	lb (kg)	lb (kg)
Static load rating	36383 (16508)	36383 (16508)	36383 (16508)	36383 (16508)
Dynamic load rating	18300 (8303)	18300 (8303)	18300 (8303)	18300 (8303)
SAE J43 rating	24200 (11000)	26083 (11856)	26083 (11856)	26083 (11856)

REAR AXLE

JCB rear axles are designed and built specifically for backhoe loaders and accept a wide variety of tire combinations.

3CX	14FT-2WD	14FT-4WD	15FT	17FT
Type	JCB limited slip differential with outboard planetary drive	JCB limited slip differential with outboard planetary drive	JCB limited slip differential with outboard planetary drive	JCB Max-Trac torque
Axle ratings	lb (kg)	lb (kg)	lb (kg)	lb (kg)
Static load rating	55125 (25011)	55125 (25011)	55125 (25011)	55125 (25011)
Dynamic load rating	27562 (12505)	27562 (12505)	27562 (12505)	27562 (12505)
SAE J43 rating	18650 (8477)	24150 (10977)	24150 (10977)	30457 (14546)

OPERATOR'S AREA

Meets SAE ROPS/FOPS requirements. Deluxe trim with standard features including the following:

	Cab	Canopy
Heavy duty suspension seat with armrests	●	●
2" seat belt (3" option)	●	●
4 front and 4 rear work lamps	●	●
Brake lights, hazard lamps, turn signals	●	●
3 speed windshield wiper and washer	●	●
Rear window wiper and washer	●	●
Tilt steering column	●	●
Interior rear view mirror	●	●
Deluxe floor, head liner and dome lamp	●	●
Deluxe floor		●
Heater/defogger with upper and lower vents	●	
Openable side and rear windows	●	
Side and front instrument panels	●	●

Helping You Get the Job Done!



JCB BACKHOE LOADER | 3CX



LOADER ATTACHMENTS – Direct Mount

Loader buckets are listed according to size and application. Numbers listed below models are bucket shipping weights. All buckets are drilled to accept optional auxiliary cutting edge or teeth. Flat top box section provides rigidity and assists in bucket leveling.

3CX	14FT	15FT	17FT
	lb (kg)	lb (kg)	lb (kg)
HD bucket – 92.5", 1.4 cu.yd.	948 (430)	948 (430)	N/A
HD bucket – 96", 1.6 cu.yd.	N/A	N/A	1325 (650)
6-in-1, 92" – with forks 1.5 cu.yd.	N/A	N/A	2160 (900)
6-in-1, 92" – with forks 1.3 cu.yd.	1940 (880)	1940 (880)	1984 (880)

HYDRAULIC SYSTEM

Open center system incorporating dual gear pumps which supply oil for loader, backhoe and steering systems. Side mounted hydraulic tank with sight glass. JCB cylinders with hose protection, structural steel tubing. Return line filter with magnet and replaceable cartridge.

3CX	14FT	15FT	17FT
	gpm (lpm)	gpm (lpm)	gpm (lpm)
Pump output – #1	24 (91)	24 (91)	24 (91)
Pump output – #2	15 (57)	17 (64)	17 (64)
Combined pump output	39 (148)	41 (155)	41 (155)
	psi (bar)	psi (bar)	psi (bar)
System relief pressure	3300 (228)	3300 (228)	3300 (228)
Offloader valve relief	3000 (207)	3000 (207)	3000 (207)
Filter rating	10 micron	12 micron	10 micron

LOADER ATTACHMENTS – Tool Carrier – Q-Fit

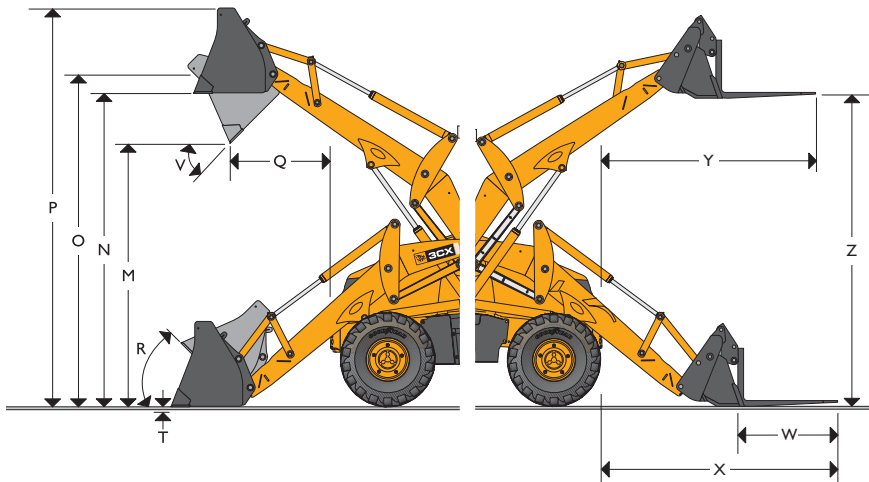
3CX	14 FT	15 FT	17 FT
Optional Q fit coupler	•	•	•
48" Pallet forks with load guard	•	•	•
2.0 cu.yd. light material bucket			
1.5 cu.yd. BHL profile bucket	•	•	•
1.75 cu.yd. loader profile bucket		•	•
12 foot truss boom	•	•	•
Side shift carriage	•	•	•
Side tilt carriage	•	•	•
Framer's carriages	•	•	•
Q-fit blank	•	•	•
Sweeper/collector	•	•	•

Consult your JCB Dealer for the complete list of Q-fit attachments and applications.

SMOOTH RIDE SYSTEM (Optional)

The JCB Smooth Ride System (SRS) consists of a dry nitrogen and oil filled cylinder installed in line with the loader lift cylinders. When activated, the Smooth Ride System allows the loader arms to float slightly. This action counteracts variations in road or site surfaces and provides the operator with a smooth ride. The JCB Smooth Ride System is manually controlled, via a rocker switch on the instrument panel, for maximum benefit and user flexibility.

LOADER DIMENSIONS



LOADER DIMENSIONS

3CX	14FT	15FT	17FT
	ft-in (meter)	ft-in (meter)	ft-in (meter)
Overall width with bucket	7-8 (2.35)	7-8 (2.35)	8-0 (2.44)
M Dump height	9-0 (2.74)	9-0 (2.74)	8-10 (2.69)
N Load over height	10-8 (3.25)	10-8 (3.25)	10-7 (3.23)
O Loader hinge pin height	11-4 (3.45)	11-4 (3.45)	11-3 (3.46)
P Maximum operating height	13-7 (4.14)	13-7 (4.14)	13-5 (4.09)
Q Dump reach at full height	2-8 (0.81)	2-8 (0.81)	2-8 (0.81)
R Rollback @ ground – degrees	46°	46°	45°
T Digging depth	0-2 (0.05)	0-2 (0.05)	0-2 (0.05)
V Dump angle – degrees	45°	45°	45°
6-in-1 Bucket fork dimensions			
W Forks – tine length	3-6 (1.07)	3-6 (1.07)	3-6 (1.07)
Forks – tine width	0-3.3 (0.08)	0-3.3 (0.08)	0-3.3 (0.08)
X Forks reach at ground level	8-8 (2.69)	8-8 (2.69)	8-8 (2.69)
Y Forks reach at full height	7-0 (2.13)	7-0 (2.13)	7-0 (2.13)
Z Forks lift height – min.	9-6 (2.90)	9-6 (2.90)	9-6 (2.90)
Fork spacing – min/max.	10" (260mm) to 68" (1725mm)		

LOADER PERFORMANCE-GP Bucket

JCB loaders provide parallel lift self leveling on the up and down cycle enhancing load retention and use of optional pallet forks. High capacity buckets combined with high lift and breakout forces maximize productivity. Optional heavy lift loader cylinders increase overall lift capacity.

3CX	14FT	15FT	17FT
	lb (kg)	lb (kg)	lb (kg)
Bucket breakout force	12638 (5734)	12638 (5734)	14560(6606)
Lift capacity to full height (optional configuration)	9231 (4188)	N/A	N/A
Lift capacity to full height (standard configuration)	6750 (3062)	9231 (4188)	9046 (4104)

LOADER PERFORMANCE– 6-in-1 Bucket

JCB loaders provide parallel lift self leveling on the up and down cycle enhancing load retention and use of optional pallet forks. High capacity buckets combined with high lift and breakout forces maximize productivity. Optional heavy lift loader cylinders increase overall lift capacity.

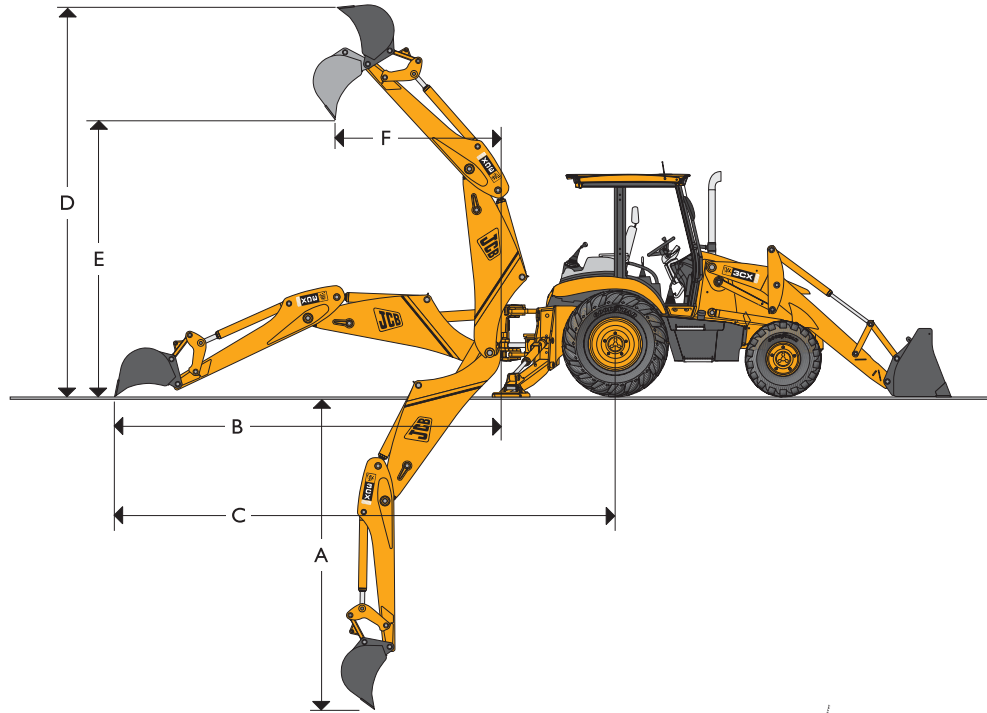
3CX	14FT	15FT	17FT
	lb (kg)	lb (kg)	lb (kg)
Bucket breakout force	13443 (6009)	13443 (6009)	15770 (7155)
Lift capacity to full height (optional configuration)	8647 (3923)	N/A	N/A
Lift capacity to full height (standard configuration)	6324 (2869)	8647 (3923)	8043 (3649)
6-in-1 bucket clamp force	6486 (2943)	6900 (3131)	6486 (2943)
Fork lift capacity – 24" center	4000 (1815)	4000 (1815)	4000 (1815)



JCB BACKHOE LOADER | 3CX



JCB BACKHOE LOADER | 3CX



BACKHOE DIMENSIONS

JCB Backhoe Loaders feature a heavy duty one piece mainframe, componentized driveline and fully enclosed engine compartment. All fluid and component compartments are lockable using the ignition key.

3CX	14FT			15FT		17FT		
	standard backhoe	Extradig – retracted	Extradig – extended	Extradig – retracted	Extradig – extended	Extradig – retracted	Extradig – extended	
A SAE dig depth – max.	ft-in (meter)	14-7 (4.45)	14-7 (4.45)	18-6 (5.63)	16-3 (4.95)	20-1 (6.12)	17-7 (5.36)	21-6 (6.55)
A SAE dig depth – 2' flat bottom	ft-in (meter)	14-5 (4.39)	14-5 (4.39)	18-4 (5.59)	16-1 (4.90)	20-0 (6.10)	17-5 (5.31)	21-5 (6.53)
B Reach from swing pivot	ft-in (meter)	17-10 (5.44)	17-10 (5.44)	21-6 (6.55)	19-5 (5.92)	23-0 (7.01)	20-11 (6.38)	24-8 (7.52)
C Reach from rear axle center	ft-in (meter)	21-9 (6.63)	21-9 (6.63)	25-6 (7.77)	23-4 (7.11)	26-11 (8.20)	24-10 (7.57)	28-7 (8.71)
D Maximum operating height	ft-in (meter)	17-8 (5.38)	17-8 (5.38)	20-6 (6.25)	18-8 (5.69)	21-0 (6.40)	20-6 (6.25)	23-1 (7.04)
E Loading height	ft-in (meter)	11-2 (3.40)	11-2 (3.40)	14-0 (4.27)	13-0 (3.96)	15-3 (4.65)	13-0 (3.96)	14-8 (4.47)
F Loading reach	ft-in (meter)	5-3 (1.68)	5-5 (1.73)	9-1 (2.77)	6-6 (1.98)	10-2 (3.10)	7-2 (2.18)	10-10 (3.30)
Swing arc – degrees		180°	180°	180°	180°	180°	180°	180°
Stabilizers – transport	ft-in (meter)	7-6 (2.29)	7-6 (2.29)	7-6 (2.29)	7-4.75 (2.25)	7-4.75 (2.25)	7-4.75 (2.25)	7-4.75 (2.25)
Stabilizers – operating	ft-in (meter)	10-10 (3.30)	10-10 (3.30)	10-10 (3.30)	10-10 (3.30)	10-10 (3.30)	10-10 (3.30)	10-10 (3.30)
Leveling angle – degrees		15°	15°	15°	15°	15°	15°	15°
Bucket rotation – degrees		185° max. power/201° max. rotation			185° max. power/201° max. rotation		185° max. power/201° max. rotation	

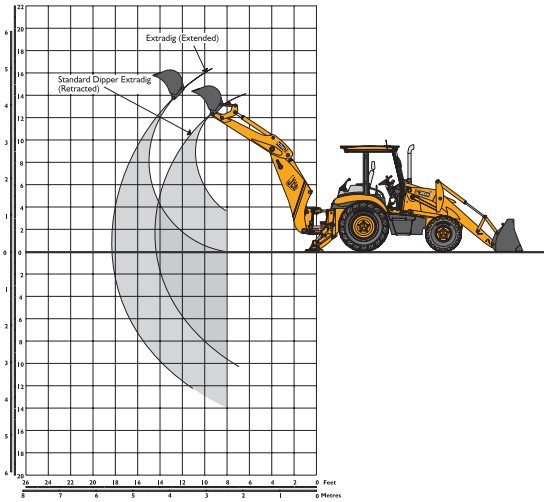


JCB BACKHOE LOADER | 3CX

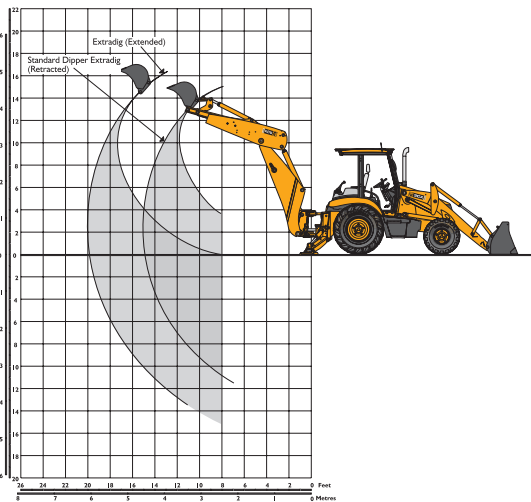


JCB BACKHOE LOADER | 3CX

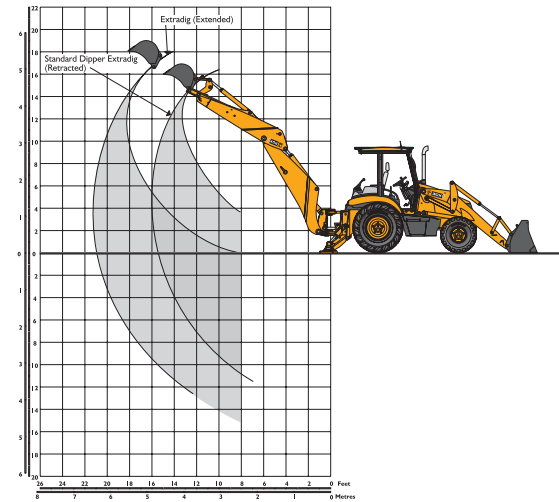
BACKHOE PERFORMANCE-3CX 14FT



BACKHOE PERFORMANCE-3CX 15FT



BACKHOE PERFORMANCE-3CX 17FT



BACKHOE PERFORMANCE

3CX	14FT			15FT		17FT	
	standard backhoe	Extradig – retracted	Extradig – extended	Extradig – retracted	Extradig – extended	Extradig – retracted	Extradig – extended
Bucket force	lb (kg)	12023 (5455)	11600 (5263)	11600 (5263)	12200 (5538)	12200 (5538)	12200 (5535)
Dipper force	lb (kg)	7919 (3593)	7919 (3593)	5518 (2504)	8235 (3963)	6390 (2899)	9110 (4133)
Dipper lift capacity – SAE J31							
+ 4 feet	lb (kg)	8200 (3721)	8150 (3698)	3860 (1751)	7800(3539)	3710 (1683)	4290 (1946)
+ 6 feet	lb (kg)	6100 (2768)	6000 (2722)	3170 (1438)	6340 (2877)	2460 (1170)	6680 (3031)
+ 8 feet	lb (kg)	5400 (2450)	5340 (2423)	2900 (1316)	5730 (2600)	3250 (1475)	6030 (2736)
+ 10 feet	lb (kg)	4800 (2178)	4680 (2123)	2630 (1193)	5360 (2432)	2030 (921)	5740 (2604)
+ 12 feet	lb (kg)	3680 (1670)	3580 (1624)	1910 (867)	4860 (2205)	2800 (1270)	5120 (2323)
Boom lift capacity – SAE J31							
+ 18 feet	lb (kg)			1500 (681)	2650 (1202)		2150 (1139)
+ 16 feet	lb (kg)			1820 (826)	3840 (1742)	2960 (1343)	3680 (1670)
+ 12 feet	lb (kg)	3840 (1742)	3370 (1529)	2150 (975)	4160 (1887)	2810 (1275)	3560 (1615)
+ 8 feet	lb (kg)	3380 (1534)	3160 (1434)	2150 (975)	3970 (1801)	2810 (1275)	3310 (1502)
+ 4 feet	lb (kg)	3230 (1466)	2950 (1338)	2160 (980)	3750 (1701)	2810 (1275)	3060 (1388)
Ground level							
- 4 feet	lb (kg)	2735 (1241)	1950 (885)	1390 (631)	3520 (1597)	2990 (1357)	2840 (1289)
- 8 feet	lb (kg)	2960 (1343)	2489 (1129)	2050 (930)	3360 (1525)	2730 (1239)	2630 (1193)
- 10 feet	lb (kg)	2830 (1284)	2330 (1057)	1930 (876)	3220 (1461)	2830 (1284)	2500 (1134)
- 12 feet	lb (kg)	2850 (1293)	2150 (975)	1910 (867)		2920 (1325)	2400 (1089)
				1910 (867)		2920 (1325)	2040 (926)

Lift capacity figures comply with SAE J31. All figures are stated in pounds (kilograms). The large arc indicates boom lift. The small arc indicates dipper lift with the boom at 63 degrees. Units are equipped with standard equipment as listed in this data sheet and a 24" backhoe bucket.



JCB BACKHOE LOADER | 3CX



BACKHOE BUCKETS

JCB Backhoe Loader buckets are designed specifically for use on JCB machines. Dual position tipping link provides positions to maximize tearout force or to maximize rotation for straight wall digging and improved load retention. All JCB buckets include heavy-duty features consisting of a 1" x 18" cutting edge, back straps, box section cross member, and full length, chamfered side cutters.

Bucket width – in.	12	18	24	24	30	36
Bucket width – mm	305	455	610	610	760	910
Number of teeth	3	4	4	5	5	6
Heavy duty trenching buckets						
Capacity – cu.ft.	2.8	4.9	7.1	7.1	9.2	11.3
Capacity – cu.m	0.08	0.14	0.20	0.20	0.26	0.32
Weight – lbs	293	359	408	419	478	544
Weight – kg	100	128	145	190	166	189
	12	18	24	24	30	36
Heavy duty high capacity trenching buckets						
Capacity – cu.ft.		5.3	8.5	8.5	11.3	14.1
Capacity – cu.m		0.15	0.24	0.24	0.32	0.40
Weight – lbs		430	509	514	588	668
Weight – kg		195	231	233	267	303

See your JCB Dealer for availability of other backhoe buckets and attachments.

JCB HYDRAULIC BREAKERS

JCB hydraulic breakers are designed for use on JCB Backhoe Loaders. They feature constant blow energy, pressure damping, heavy-duty side plates and high impact frequency for maximum production. Coupled with factory installed hydraulic breaker circuit, the JCB breakers and backhoe loader make a perfect demolition combination. Model 360Q is equipped with sound insulation for quiet operation.

Breaker model	360	360Q	550
Energy class – ft./lb	750	750	1100
Impact frequency – bpm	600-1800	600-1800	450-1000
Oil flow range – gpm (lpm)	13-40 (50-150)	13-40 (50-150)	16-36 (62-132)
Operating weight – lb (kg)	891 (405)	921 (418)	1183 (583)
Operating pressure – psi (bar)	1450-2100 (100-145)	1450-2100 (100-145)	1305-1815 (190-125)
Tool diameter – in. (mm)	2.75 (70)	2.75 (70)	3.31 (82)

A wide variety of tools are available for JCB breakers. See your JCB Dealer.

SERVICE CAPACITIES

3CX	2WD gal (liter)	4WD gal (liter)
Cooling system	6.1 (23)	6.1 (23)
Fuel tank	42.5 (160)	42.5 (160)
Engine with filter	3.9 (15)	3.9 (15)
Synchro shuttle trans w/filter	4.2 (16)	4.2 (16)
Powershift trans w/filter	N/A	4.2 (16)
Autoshift trans w/filter	N/A	N/A
Rear axle	4.2 (16)	4.2 (16)
Front drive axle	N/A	4.2 (16)
Drive axle hubs – each	0.4 (2)	0.4 (2)
Hydraulic tank	22 (83)	22 (83)
Hydraulic system incl. tank	33.4 (127)	33.4 (127)

JCB PRECISION CONTROLS (OPTIONAL)

JCB Precision Controls offers smooth, low effort and precise backhoe operation while reducing operator fatigue. Excavator control joysticks are integrated into the seat armrests which provides increased legroom, improved job visibility and hydraulic excavator ergonomics. A proportional switch is mounted in the joystick to operate JCB's Extradig. An optional joystick mounted switch is also available to operate auxiliary attachments. The low effort mechanical loader control incorporates an optional proportional roller to operate loader mounted attachments.

Best in class hydraulic modulation combined with the greatest digging performance, means that the JCB Precision Controls are unmatched in any backhoe loader.



JCB BACKHOE LOADER | 3CX



THE BEST BACK-UP IN THE BUSINESS

Buy any of the JCB Backhoe Loader models and you'll get a complete deal that extends beyond that of any rival.

FINANCE

Your JCB Dealer can meet your financial needs through a variety of plans for leasing, lease purchases with or without options, installment sales contracts and rental programs.

PARTS

JCB Dealers' convenient locations offer excellent 'over the counter' parts availability.

WARRANTY

JCB Backhoe Loaders are covered by JCB's one year standard warranty, which is outlined in the JCB 'Certificate of Warranty'. Extended warranty coverage is also available. Contact your JCB Dealer for details.

REGIONAL PARTS DEPOTS

For the breakdown part your dealer may not have in stock, JCB has SDD 'Same Day Dispatch,' from one of two parts distribution centers in the United States and one in Canada.

SERVICE

JCB Dealer service people are committed to keeping your JCB up and running. JCB Dealer mechanics are enrolled in on-going training programs and supported by experienced JCB Service Representatives based throughout North America.



JCB Headquarters Savannah, 2000 Bamford Blvd., Pooler, GA 31322. Tel: 912.447.2000. Fax: 912.447.2299. www.jcb.com

JCB reserves the right to change design, materials and/or specifications without notice. Specifications are applicable to units sold in the United States and Canada. The JCB logo is a registered trademark of J C Bamford Excavators Ltd. USA 21049-??-2/06 Issue 2

JCB BACKHOE LOADER | 3CX

Helping You Get
the Job Done!