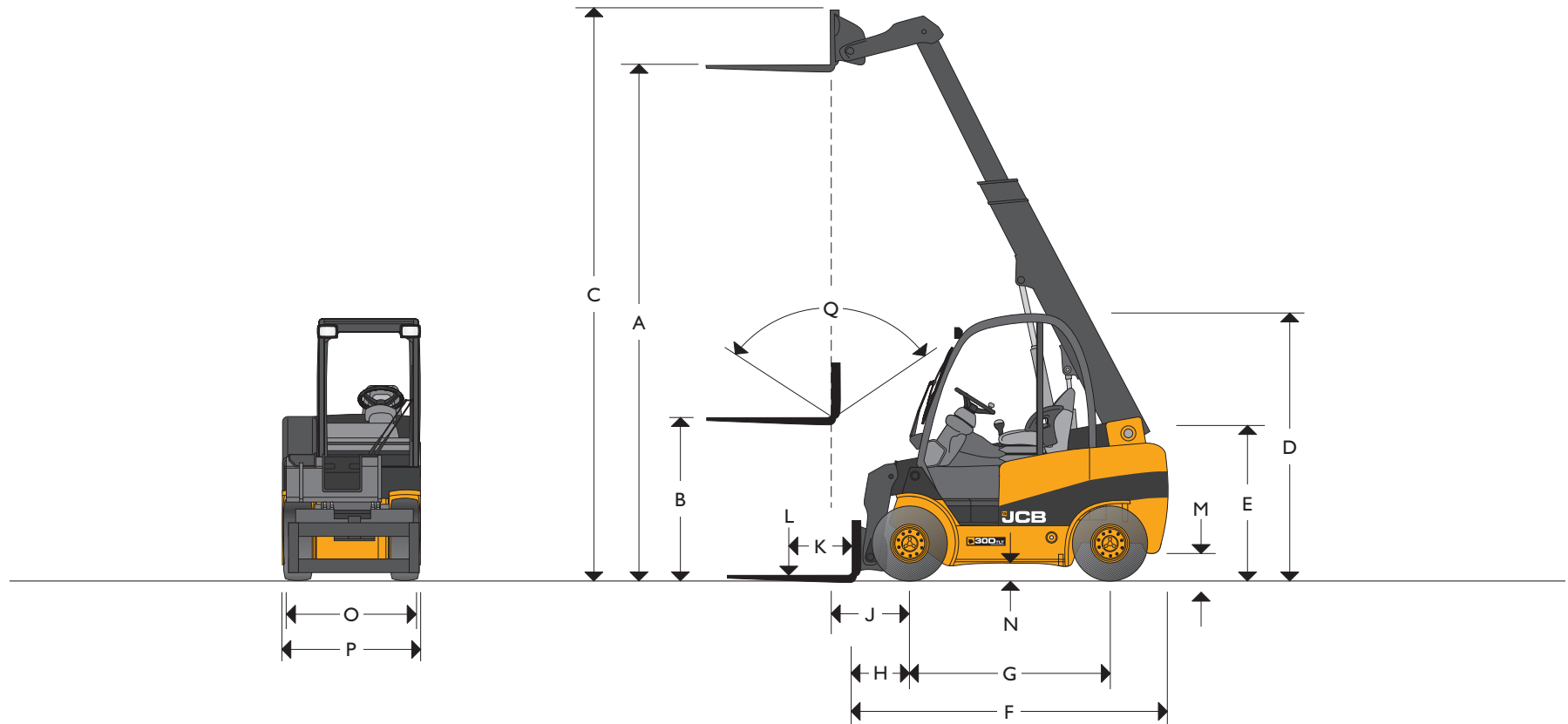




ENGINE FUEL TYPE: DIESEL LIFT CAPACITY: UP TO 6,600 lb MAX HORSEPOWER: 50 hp Tier III Engine



STATIC DIMENSIONS

| Model | | TLT 30D 4X4 | Model | | TLT 30D 4X4 | | |
|-------|--|-------------|-----------------------|---|---|---------|-------------|
| A | Lift Height | in (mm) | 158 (4000) | J | Distance from c/l of Front Axle to Fork Face (at full height) | in (mm) | 29 (715) |
| B | Free Lift (standard) | in (mm) | 61.4 (1560) | K | Load Center | in (mm) | 20 (500) |
| C | Height Boom Extended | in (mm) | 189 (4805) | L | Lift Capacities (with sideload) | lb (kg) | 6614 (3000) |
| D | Height of Overhead gGard (std/low) | in (mm) | 90.5/86.6 (2300/2200) | M | Ground Clearance (lowest point) | in (mm) | 6.5 (165) |
| E | Height of Operator's Seat (std/low) | in (mm) | 49/48 (1241/1221) | N | Ground Clearance Wheelbase Center | in (mm) | 7.5 (192) |
| F | Length to Fork Face | in (mm) | 111 (2840) | O | Fork Carriage Width | in (mm) | 47 (1200) |
| G | Wheelbase | in (mm) | 70 (1780) | P | Maximum Width of Machine | in (mm) | 55 (1400) |
| H | Distance from c/l of Front Axle to Fork Face (at ground level) | in (mm) | 21 (515) | Q | Carriage Tilt Total f/b Variable Through Lift Arc | degrees | 111 |



GENERAL SPECIFICATION

| Model | TLT 30D 4X4 | |
|---|---------------------------------------|------------------|
| Engine Type | Diesel | |
| Emission Certificate | EPA Tier III (EU Stage 3) | |
| Engine Manufacturer | Perkins | |
| Engine Model | 404 2.2 | |
| Engine Output (gross power) | hp (kW) | 50 (37) |
| Rated rpm | 2600 | |
| Number of Cylinders | 4 | |
| Cubic Capacity | cu-in ³ (cm ³) | 135 (2200) |
| Working Pressure for Attachments | psi (bar) | 2465 (170) |
| Oil Flow for Attachments | gal/min (l/min) | 19 (70) |
| Max Reach Ground Level (24 in load center) | in (mm) | 87 (2230) |
| Max Reach Boom Horizontal (24 in load center) | in (mm) | 93 (2390) |
| Turning Radius | in (mm) | 118 (2997) |
| Aisle Width 90° Stacking 1000 x 1200 mm | in (mm) | 185 (4710) |
| Weight Unladen | lb (kg) | 11,220 (5100) |
| Travel Speeds | mph (km/h) | 6.2/12.4 (10/20) |
| Gradeability (laden/unladen) | % | 30/28 |
| Transmission | TCR Hydro | |
| Park Brake Type | Hand | |
| Bucket Rated Capacity | ft ³ (m ³) | 21 (0.6) |
| Bucket Struck Capacity | ft ³ (m ³) | 17.5 (0.5) |
| Bucket Dump Height (30°) | in (mm) | 100 (2550) |
| Bucket Rollback Angle at Ground | degrees | 37 |
| Bucket Width | in (mm) | 54 (1385) |
| Tire Size Front (standard) Pneumatic | 27 x 10 x 12 | |
| Tire Size Rear (standard) Pneumatic | 27 x 10 x 12 | |

STANDARD FEATURES

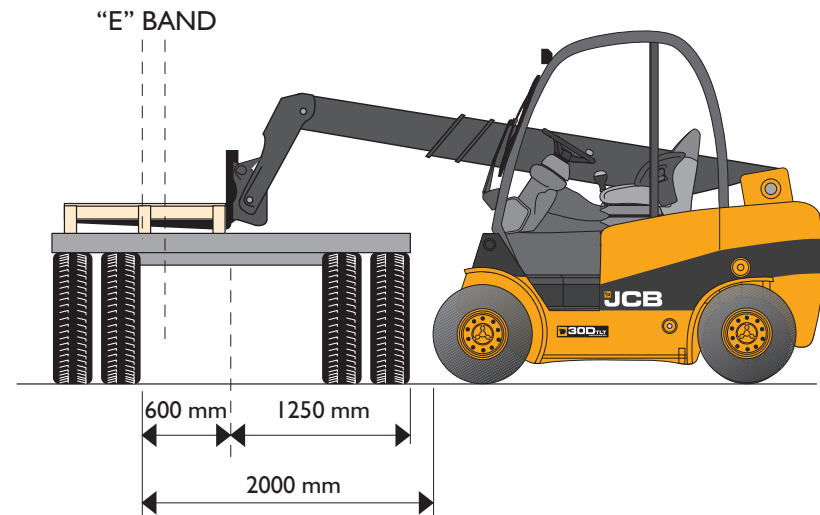
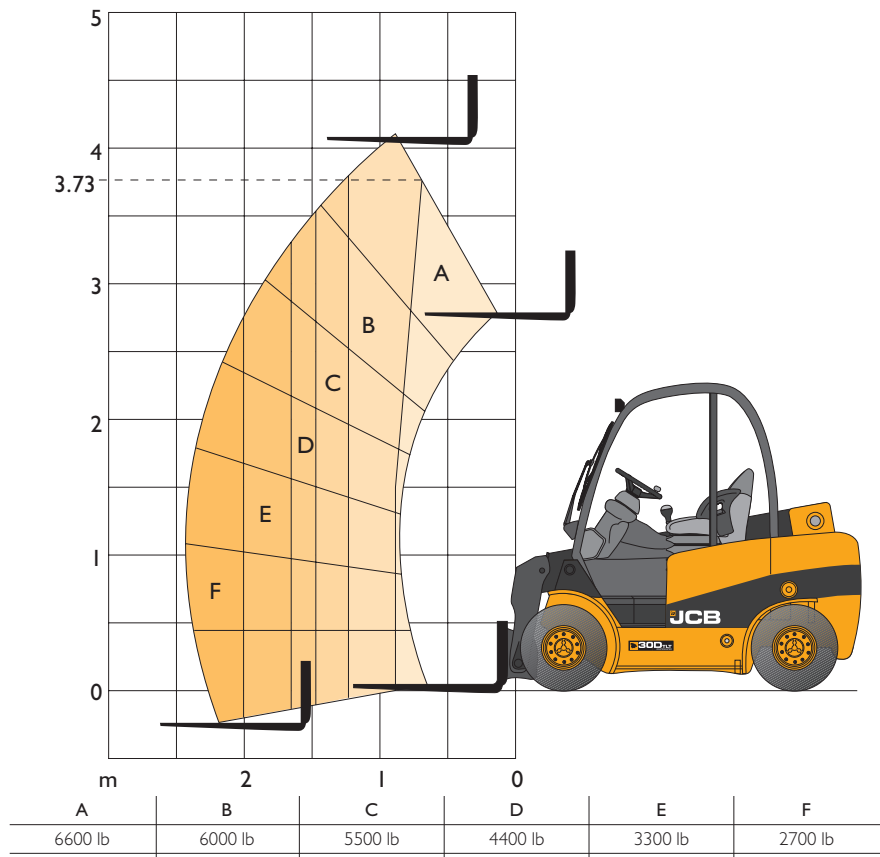
- Four-wheel-drive permanently engaged.
- Three drive modes selectable for travel, work, gradients.
- Excellent turning radius @ under 120 in (3 m) and good ground clearance @ 7.5 in (192 mm).
- Short overall length @ 112 in (2.8 m).
- Lift capacity 6,000 lb (3,500 lb @ 78 in for truck loading).
- Power unit 2.2 liter diesel.
- JCB 'TCR' torque converter response transmission.
- 111 degree carriage tilt.
- Superb forward visibility.
- Comfortable operator's enclosure (structure fully meets international safety standards for (ROPS) Roll-Over Protection and (FOPS) Falling Object Protection).
- Seat belt and hip restraint on fully adjustable seat.
- Self levelling forks.
- Hose-burst-check valves on tilt, lift, and extension cylinder circuits.
- Front screen guard.
- Operator's daily checks completed via single easy-access panel, and excellent service access to major components.
- Battery isolator.
- Security etched glazing.
- Working lights front and rear.
- Slim line high visibility boom for maximum fork tip visibility.

OPTIONS

Over 100 build options, including:

- Choice of pneumatic or foam filled tires.
- Lightweight re-handling bucket.
- Bagezee 'trapdoor' bucket for loading/filling big bags in single operation.
- Quick disconnect system for easy changing between attachments.
- Sideshift carriage and various forks.
- Range of load guards, attachments, exhaust purification systems, etc.
- Various operator environments: safety mesh to operator's right, glazing to front/rear/top. Full cab with door and heater or air conditioning.
- Low-height cab (for containers check height and floor loadings).
- Vinyl or fabric seat in high/standard/low versions.
- Roadlights.

LIFT CAPACITIES





A GLOBAL COMMITMENT TO QUALITY

JCB's total commitment to its products and customers has helped it grow from a one-man business into one of the world's largest manufacturers of backhoe loaders, crawler excavators, wheeled excavators, telescopic handlers, wheeled loaders, dump trucks, rough terrain fork lifts, industrial fork lifts, mini/midi excavators, skid steer loaders and tractors.

By making constant and massive investments in the latest production technology, the JCB factories have become some of the most advanced in the world.

By leading the field in innovative research and design, extensive testing and stringent quality control, JCB machines have become renowned all over the world for performance, value and reliability.

And with an extensive dealer sales and service network in over 150 countries, we aim to deliver the best customer support in the industry.

Through setting the standards by which others are judged, JCB has become one of the world's most impressive success stories.



JCB Headquarters Savannah, 2000 Bamford Blvd, Savannah, GA 31322 Tel: (912) 447-2000 Fax: (912) 447-2299 www.jcb.com

JCB reserves the right to change design, materials and/or specifications without notice. Specifications are applicable to units sold in the United States and Canada. The JCB logo is a registered trademark of J C Bamford Excavators Ltd.