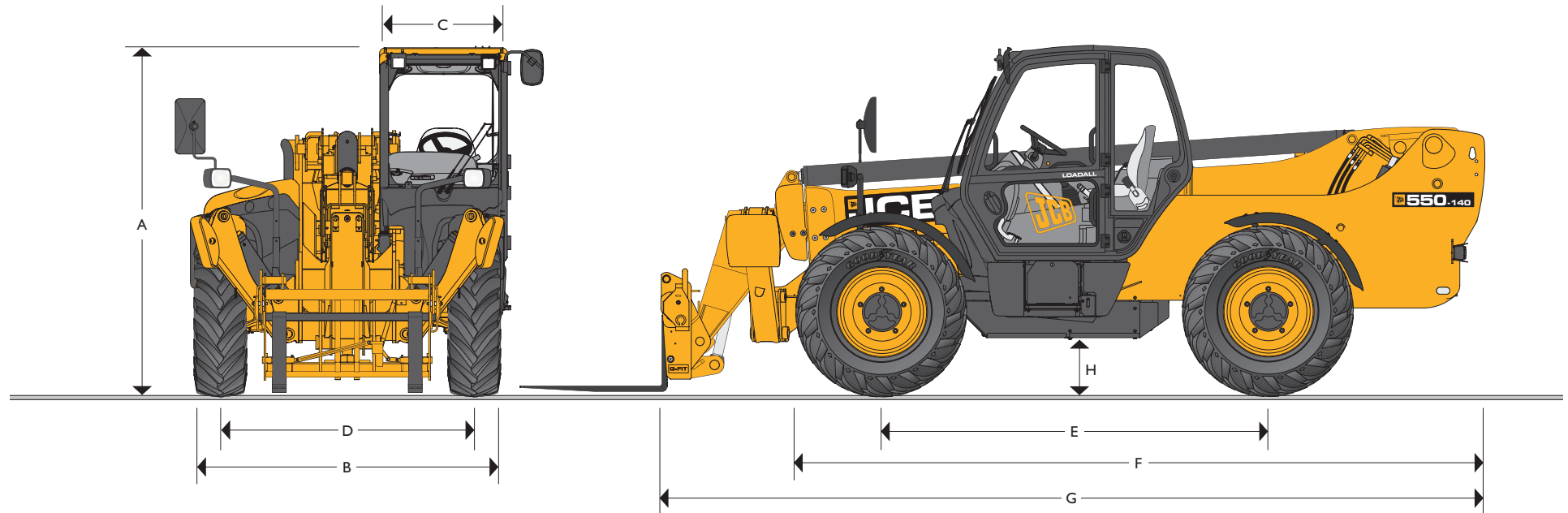


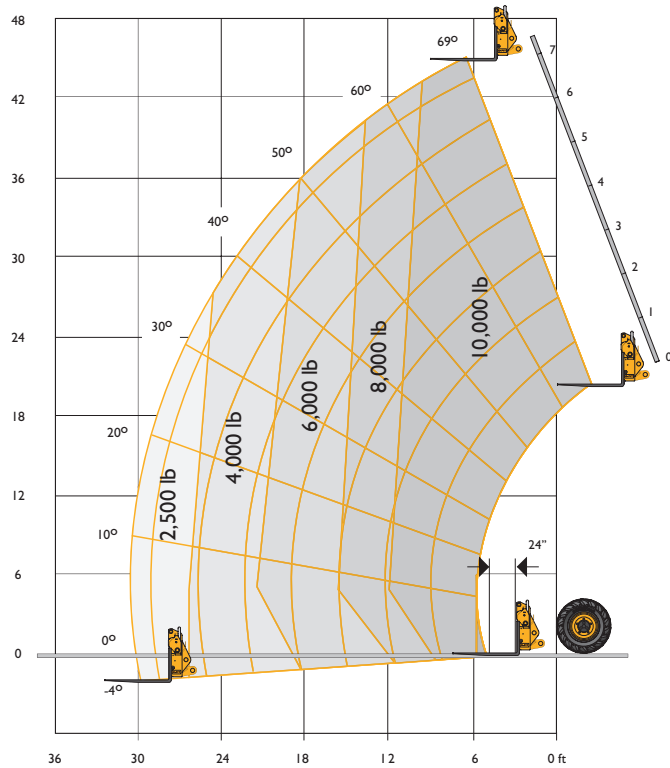
MAX PAYLOAD: 10,000 lb (4,535 kg)    MAX LIFT HEIGHT: 44 ft 3 in (13.5 m)    MAX HORSEPOWER: 100 hp (74.2 kW)



### STATIC DIMENSIONS

A Overall Height	ft-in (m)	9-7 (2.59)	G Overall Length to Front Carriage	ft-in (m)	20-6 (6.25)
B Overall Width (over tyres)*		7-9 (2.35)	H Ground Clearance		1-4 (0.40)
C Inside Width of Cab		3-1 (0.94)	Outside Turn Radius (over tyre)		13-5 (4.10)
D Front Track		6-3 (1.90)	Weight	lb (kg)	24,449 (11,090)
E Wheelbase		9-6 (2.90)	Tyres		15.5-25
F Overall Length to Front Tyres		17-0 (5.18)			

\*Dependant upon tyre specified.

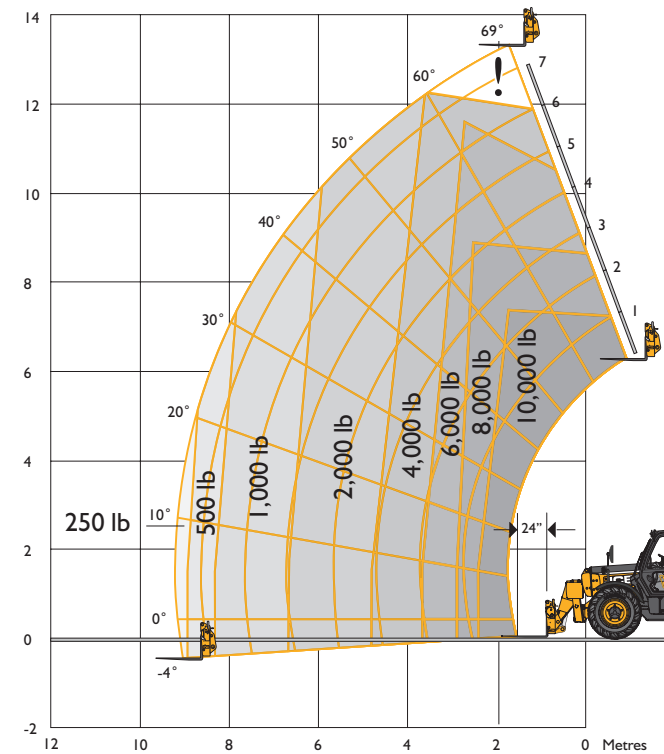


Ballasted Tires

**LIFT PERFORMANCE – STABILIZERS DOWN**

Maximum Lift Capacity	lb (kg)	10,000 (4535)
Lift Capacity to Full Height	lb (kg)	10,000 (4535)
Lift Capacity at Full Reach	lb (kg)	2500 (1133)
Lift Height	ft-in (m)	44-3 (13.50)
Reach at Maximum Lift Height	ft-in (m)	5-6 (1.71)
Maximum Forward Reach	ft-in (m)	30-8 (9.39)

Complies with stability test ASME B56.6



Chassis Levelling (Sway)  
With stabilisers retracted (Sway angle ±9°)  
Ballasted Tires

**LIFT PERFORMANCE – STABILIZERS UP**

Maximum Lift Capacity	lb (kg)	10,000 (4535)
Lift Capacity to Full Height	lb (kg)	6000 (2721)
Lift Capacity at Full Reach	lb (kg)	1250 (567)
Lift Height	ft-in (m)	44-3 (13.50)
Reach at Maximum Lift Height	ft-in (m)	5-6 (1.71)
Maximum Forward Reach	ft-in (m)	30-8 (9.39)

Complies with stability test ASME B56.6



### ENGINE - JCB DIESELMAX

Latest technology and advanced design provides low fuel consumption, reduced noise, high torque and power output, total reliability and minimal maintenance.

Two-stage, dry type air filter with primary and safety elements. **EPA Tier II emissions compliant.**

Displacement	in <sup>3</sup> (l)	269 (4.4)
No of Cylinders		4
Aspiration		Turbo
<b>Power Rating</b>		
Power @ 2200 rpm	hp (kW)	100 (74.2)
<b>Torque Rating</b>		
Torque @ 1300 rpm	lbf ft (nm)	324 (440)

### TRANSMISSION

JCB powershift transmission incorporating torque converter, bevel box and a 4 speed powershift gearbox in one resiliently mounted unit.

A combined steering column mounted switch incorporating directional control and 4 forward and 4 reverse powershift gears.

Travel speed 25 km/h (16 mph), optional 33 km/h (20.5 mph).

**Front and Rear Drive Axles:** JCB epicyclic hub reduction drive/steer axles with Max-Trac torque proportioning differentials. Permanent 4 wheel drive.

### BRAKES

**Service Brakes:** Servo-assisted-hydraulically activated, self-adjusting, oil-immersed multi-disc type on front and rear axle.

**Parking Brake:** Hand operated disc brake on output of gearbox.

### BOOM AND CARRIAGE

Boom is manufactured from high tensile steel.

Low maintenance, hard wearing pads.

JCB Q-fit self-levelling carriage with lever operated pin locking accepts pallet forks and a wide range of attachments.

One boom end auxiliary hydraulic service fitted as standard.

### SAFETY CHECK VALVES

Fitted to carriage tilt, telescopic and boom lift cylinders.

### SERVICE CAPACITIES

Fuel Tank	gal (l)	32.1 (146)
Hydraulic Tank	gal (l)	35 (131)
Coolant	gal (l)	6 (23)

### STEERING

Hydrostatic power steering.

Three steer mode options: front wheel steer; all wheel steer; crab steer: operated from in the cab by a selection lever.

### OPTIONS AND ACCESSORIES

Options: Front and rear working lights, industrial tyres, electrical 2/4WD select, radio kit, air conditioning, air suspension seat, delux cab trim, windshield and roof guard.

Attachments: Contact your local dealer for details of the comprehensive range.

### HYDRAULICS

Two Stage Gear Pump with Suction Strainer and Filter.

Operating System Pressure	psi (bar)	3500 (241)
Pump Flow	l/min	103
<b>Hydraulic Cycle Times</b>		<b>Seconds</b>
Boom Raise		14.2
Boom Lower		11.9
Extend		22.3
Retract		18.6
Bucket Dump		2.4
Bucket Crowd		3.2

### ELECTRICS

12 v negative earth. 1000 CCA battery. 95 amp alternator. Hazard warning. Reverse alarm. Optional full road lighting. Reversing light. Direction indicators.

### CAB

Quiet safe and comfortable cab conforms to ROPS ISO 3471 and FOPS ISO 3449. Tinted glass all round. Laminated roof screen. Roof bars, front, rear and roof screen wiper/washer and heater/screen defroster. Opening rear window.

Audio-visual warning system for coolant temperature, engine oil pressure, air cleaner, battery charge, transmission oil, water in fuel temperature and pressure. Hourmeter and road speed indicator. Engine temperature, fuel gauge and inclinometer.

Adjustable steer column with stalk bar powershift change and forward reverse shuttle. Throttle and brake pedal.

Adjustable suspension seat with adjacent mechanically activated park brake. Includes leveling inclinometer. Safety canopy as above but with side glass and roof glass only (screen wiper and heater/screen defroster not applicable).

## A GLOBAL COMMITMENT TO QUALITY

JCB's total commitment to its products and customers has helped it grow from a one-man business into Britain's largest privately owned manufacturer of backhoe loaders, crawler excavators, wheeled excavators, telescopic handlers, wheeled loaders, dump trucks, rough terrain fork lifts, industrial fork lifts, mini/midi excavators, skid steer loaders, tractors and compaction equipment.

By making constant and massive investments in the latest production technology, the JCB factories have become some of the most advanced in the world.

By leading the field in innovative research and design, extensive testing and stringent quality control, JCB machines have become renowned all over the world for performance, value and reliability.

And with a global sales and service network of more than 650 dealers and agents, we aim to deliver the best customer support in the industry.

Through setting the standards by which others are judged, JCB has become one of the world's most impressive success stories.



JCB Sales Limited, Rocester, Staffordshire ST14 5JP. Tel: 01889 590312. Fax: 01889 590588. Web: <http://www.jcb.com>

JCB reserves the right to change specifications without notice. Illustrations shown may include optional equipment and accessories. The JCB logo is a registered trademark of J C Bamford Excavators Ltd.



9999/5546 02/12 Issue 1